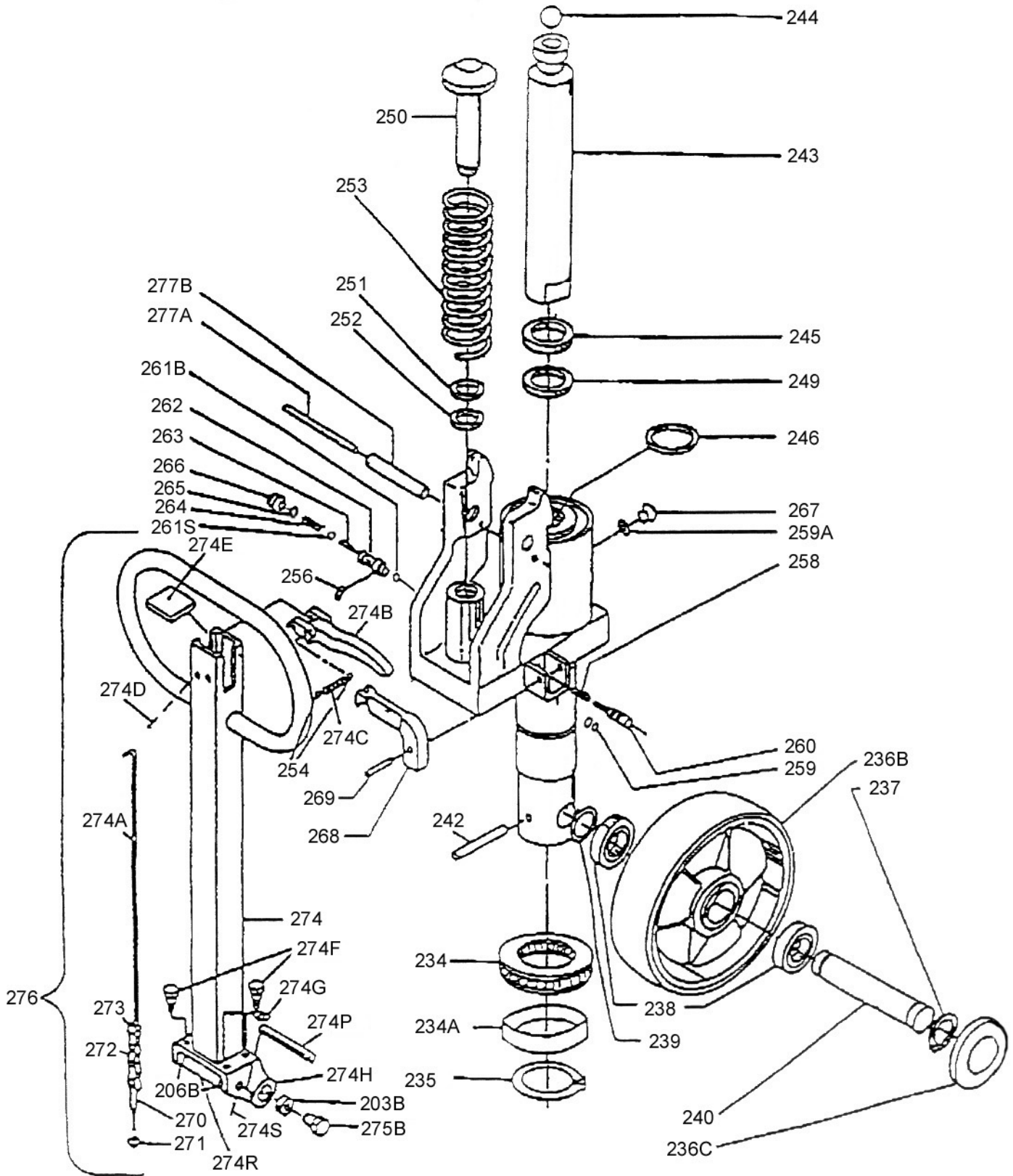




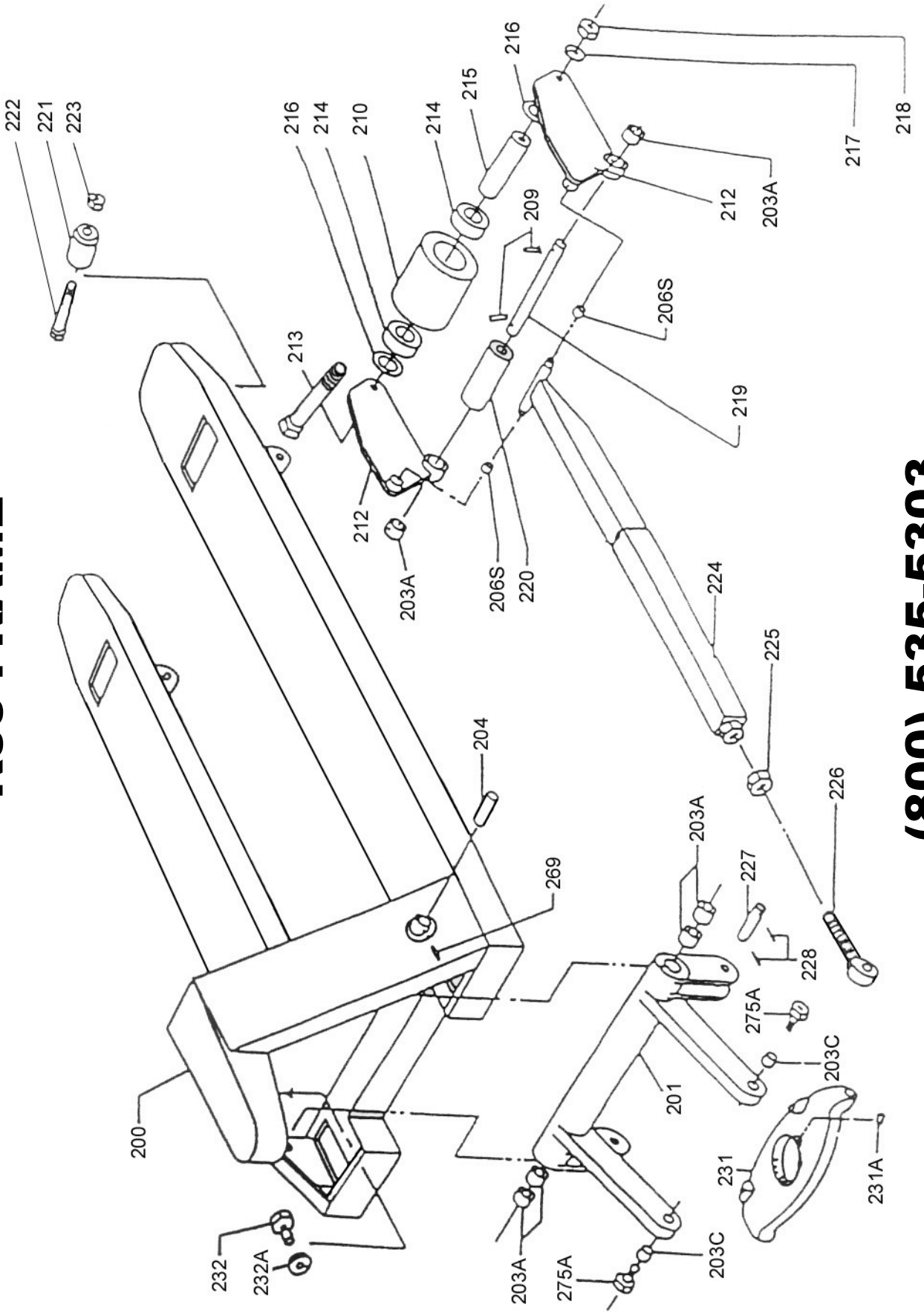
# K55 HYDRAULIC PUMP



**(800) 535-5303**



# K55 FRAME



**(800) 535-5303**

# K55 PARTS LIST

Part #	Description
200	Chassis-please specify model and size
201	Torsion bar-20.5" or 27"-specify size
203A	Bushing @ frame
203B	Bushing @ handle
203C	Bushing @ thrust plate
204	Pin
206B	Bushing
206S	Bushing
209	Pin
210	Poly roller
212	Lever arm assy
213	Axle bolt
214	Ball bearings
215	Axle roller
216	Washer
218	Nut
219	Pin
220	Exit roller
221	Entry roller
222	Bolt
223	Nut
224	Pushrod-specify truck length
225	Lock nut
226	Eye bolt
227	Pin
228	Pin
231	Thrust plate
231A	Grease nipple
232	Lock bolt
232A	Lock washer
234	Thrust bearing
234A	Thrust bearing collar
235	Snap ring
236B	Wheel
236C	Hub Cap
237	Snap ring
238D	Ball bearing
239	Washer
240	Wheel Axle
242	Spring pin
243	Piston
244	Ball
245	Wiper ring
246	Seal
249	Seal

Part #	Description
250	Pump Piston
251	Wiper Ring
252	Seal
253	Spring
254	Ball
256	O-ring
258	Spring
259	O-ring
259A	Seal
260	Release valve
261B	Ball
261S	Ball
262	Ball valve
263	Pin
264	Spring
265	O-ring
266	Plug bolt
267	Oil level plug
268	Lever
269	Pin
270	Adjusting bolt
271	Nut
272	Chain
273	Pin
274	Outer handle
274A	Handle control rod
274B	Control Lever
274C	Spring
274D	Split pin
274E	Cap
274F	Bolt
274G	Washer
274H	Handle bracket
274P	Bolt
274R	Roller
274S	Split pin
275A	Shoulder bolt @ thrust plate
275B	Shoulder bolt @ handle
276	Handle complete
277	Pump complete w/handle
277A	Split pin
277B	Roller
278	Seal kit
279	Valve kit

**\*\*Add a "H" to end of the part number for 8000lbs. or 10,000lbs. trucks**

**(800) 535-5303**



## **KOKE PALLET TRUCK WARRANTY**

**Koke Inc.** Will guarantee this product against material or manufacturing defects provided the truck has not been abused and is used under normal conditions\*.

**Koke Inc.** Will provide replacement components for those deemed defective by **Koke Inc.** Under the terms listed below for the following models:

**Models: K55, K55M, K55-4Way**

The complete hydraulic pump and handle assembly is covered for (2) years. The chassis and associated components Are covered for (12) months. Wearable components such as wheels, rollers, and bushings are covered for (6) months.

**Models: K80, K100, K55SS**

All parts and components are covered for a (6) month period.

All warranty periods begin as of the date of purchase.

This warranty does not include labor or miscellaneous costs involved in the replacement of any components determined to be defective.

In order to claim for warranty, you must supply the truck serial number, as well as the date of purchase. \*Any truck used under adverse conditions, such as fish, meat or poultry processing plants, tanneries, freezer applications, or any other applications where the unit is operating in water or subjected to fluid or chemicals, is **NOT** covered under any warranty. A freezer special truck prevents the frame and components from rusting out prematurely. The hydraulic pump, all bearings, as well as bushings are still subject to condensation and therefore premature failure. Bent, twisted or misaligned forks are clear signs of abuse and are **NOT** covered under any warranty.